

CMA5000

Multi-Layer Test Solution Order Guide



CMA5000 Multi-Layer Test Solution Order Guide

NOTES:

¹ The CMA5000 platform with large bay adapter or dedicated AC power source does not include the AC charger/adapter or Li-Ion battery

² Although there are 6 module bays, only 4 provide electrical contacts (see illustration)

³ Large Bay Adapter features Pentium III 733 MHz/512MB RAM (standard) minimum

CMA5000 - Mainframe Order Guide

The CMA5000 Mainframe is available with a Small (SBA), Medium (MBA) or Large (LBA) Bay Adapter and includes the following¹:

Color display with touch screen, modular CD-ROM drive, operator's manual, support CD, Li-Ion battery (1), AC charger/adapter, 10/100 MB Ethernet Port, USB (2), PC card (PCMCIA) slots (2), large capacity hard drive, 256 MB RAM³ and choice of AC line cord.

5000-____ 0-____ - ____
A B C D

A = Select Bay Adapter

- 1 = 2-slot Small Bay Adapter
- 2 = 4-slot Mid Bay Adapter
- 3 = 6-slot Large Bay Adapter²

C = Select Power Source

- DC = Battery with AC Charger (SBA or MBA only)
- AC = Dedicated AC Power Only
- DC24 = +24V DC Power (LBA only)
- DC48 = -48V DC Power (LBA only)

B = Select Drive/Desktop Option

- 0 = CD-Read Only (SBA only)
- 5 = CD-Read/Write, Windows Desktop
- 7³ = Pentium III 700 MHz/512 MB RAM minimum, CD-R/W, Windows Desktop (requires dedicated AC Power)

D = Select Line Cord Option

- US = United States
- EU = Europe
- SW = Switzerland
- AU = Australia
- UK = United Kingdom
- IT = Italy



Small Bay Adapter (SBA)



Mid Bay Adapter (MBA)



Large Bay Adapter (LBA)



Example of order number and specifications

5000-100-DC-US	Controller with a Small Bay Adapter, Standard Color Display, CD-R (Read only), Battery Powered, AC/DC, US line cord
5000-250-AC-EU	Controller with a 4-slot Mid Bay Adapter, Standard Color Display, Pentium III 733MHz, CD-RW (Read/Write), Windows Desktop, Dedicated AC power supply with European line cord

NOTES:

¹ Must be added as a separate line item

Optical Accessories ¹	
Option-501CD-RW	CMA5000 CD/read/write module upgrade
Option-502FLOPPY	CMA5000 floppy drive module
Option-503DESKTOP	CMA5000 Windows® desktop upgrade (adds desktop option to units without)
Option-505MAN	CMA5000 Replacement platform user's guide
Option-506KEYUS	CMA5000 US keyboard with trackball
Option-507KEYUS	CMA5000 US keyboard
Option-511AC	Replacement AC charger/adapter for CMA5000 and CMA4500
Option-512HCBATT	CMA5000 high voltage battery for OTA, GigE and 10 GigE
Option-513ACPOWER	Dedicated AC power module for configurations with high power requirements
Option-515PRINT	CMA5000 portable external printer with cable and case
Option-520HCASE	CMA5000 SBA hard transit case
Option-521HCASEML	CMA5000 MBA hard transit case
Option-522SCASE	Soft bag, CMA5000 SBA/MBA
Option-526TRIPOD	Mounting tripod for CMA 5000 SBA
Option-528HCASEL	CMA5000 LBA hard transit case
Option-5310DLXCASE	Deluxe hardcase for MBA or SBA featuring storage for up to 6 additional modules
Option-529STYLUS	Replacement Stylus for CMA (pack of 3)
Option-534MODCASE	Hard transit case for one OSA425, OSA400 or PMD module
Option-545VIP	USB Video Inspection Probe
Option-546VIPA	USB Video Inspection Probe - Advanced analysis option
Option-550TFMFC	Test Fiber Module SM 1.1km - FC ultra polished Connector
Option-550TFMSC	Test Fiber Module SM 1.1km - SC ultra polished Connector
Option-550TFMST	Test Fiber Module SM 1.1km - ST ultra polished Connector
Option-551TFMFC	Test Fiber Module 62.5 µm 300 m - FC Connector
Option-551TFMSC	Test Fiber Module 62.5 µm 300 m - SC Connector
Option-551TFMST	Test Fiber Module 62.5 µm 300 m - ST Connector
Option-552TFMFC	Test Fiber Module 50 µm 300 m - FC Connector
Option-552TFMSC	Test Fiber Module 50 µm 300 m - SC Connector
Option-552TFMST	Test Fiber Module 50 µm 300 m - ST Connector
Option-591EXT1	CMA5000 1 Year extended warranty
Option-592EXT2	CMA5000 2 Year extended warranty
Option-580DATA	USB data transfer kit, includes software and cable for Windows® 98/2000/XP

CMA5000 Multi-Layer Test Solution Order Guide

LEGEND

- Go**
Available power option
- Stop**
Not supported with this power configuration
- N/A**
Does not fit in SBA and requires all slots of MBA

Note
When using multiple modules, you must review all module technologies to confirm operability.

CMA5000 SBA and MBA Configuration Table											
New Units (controller and modules) featuring an Intel 700MHz Celeron with 256MB RAM (min) processor and battery or AC brick											
	Alone	OTDR	CD-OTDR	10GigE	1GigE	XTA 2.5G	XTA 2.5 Gig J&W	XTA 10G	STFM	OSA 425/400	PMD 160
OTDR	Y	Y	Y	Y	Y	Y	N	Y	Y		
CD-OTDR	Y	Y	Y	Y	Y	Y	N	Y	Y		
10GigE	Y	Y	Y	Y	Y	Y	N	N	Y		
1GigE	Y	Y	Y	Y	Y	Y	N	N	Y		
XTA 2.5G	Y	Y	Y	Y	Y	Y	N	N	Y		
XTA 2.5 Gig J&W	Y	N	N	N	N	N	N	N	Y		
XTA 10G	Y	N	N	N	N	N	N	N	Y		
STFM	Y	Y	Y	Y	Y	Y	Y	Y	Y		
OSA 425/400											
PMD 160											
NOTES: 1 This table only applies to new module shipments. 2 This table is based on a new or updated controller featuring the blue battery and software revision v20041201 or later.											
CMA5000 SBA and MBA Configuration Table											
New Units (controller and modules) featuring an Intel 700MHz Celeron with 256MB RAM (min) processor and a dedicated AC Power Module											
	Alone	OTDR	CD-OTDR	10GigE	1GigE	XTA 2.5G	XTA 2.5 Gig J&W	XTA 10G	STFM	OSA 425/400	PMD 160
OTDR	Y	Y	Y	Y	Y	Y	Y	Y	Y		
CD-OTDR	Y	Y	Y	Y	Y	Y	Y	Y	Y		
10GigE	Y	Y	Y	Y	Y	Y	Y	Y	Y		
1GigE	Y	Y	Y	Y	Y	Y	Y	Y	Y		
XTA 2.5G	Y	Y	Y	Y	Y	Y	N	Y	Y		
XTA 2.5 Gig J&W	Y	Y	Y	Y	Y	N	N	N	Y		
XTA 10G	Y	Y	Y	Y	Y	Y	N	N	Y		
STFM	Y	Y	Y	Y	Y	Y	Y	Y	Y		
OSA 425/400											
PMD 160											
NOTES: 1 This table only applies to new module shipments. 2 This table is based on a new or updated controller featuring software revision v20041201 or later.											

LEGEND

- Go**
Available power option
- Stop**
Not supported with this power configuration
- N/A**
Does not fit in SBA and requires all slots of MBA

Note
When using multiple modules, you must review all module technologies to confirm operability.

CMA5000 SBA and MBA Configuration Table																				
Units featuring Celeron Processor and Blue Battery/AC Brick for use with existing modules .																				
	Alone	OTDR	CD-OTDR	10GigE	1GigE	Old OTA 2.5G 0x04101 ²	Old OTA 10G 0x04103 ²	Old OTA 2.5G 0x04201 ²	Old OTA 10G 0x04203 ²	Old OTA J&W 2.5G 0x04204 ²	Old OTA 2.5G 0x04301 ²	Old OTA J&W 10G 0x04304 ²	Old OTA 10G 0x4303 ²	XTA 2.5G	XTA 10G	XTA J&W 2.5G	Fiber Channel	Phase CD	STFM	
OTDR	Y	Y	Y	Y	Y	Y	Y	Y	Y	N	Y	N	N	Y	Y	N	Y	Y	Y	
CD-OTDR	Y	Y	Y	Y	Y	Y	Y	Y	N	N	Y	N	N	Y	Y	N	Y	Y	Y	
10GigE	Y	Y	Y	Y	Y	Y	N	Y	N	N	Y	N	N	Y	N	N	Y	Y	Y	
1GigE	Y	Y	Y	Y	Y	Y	N	Y	N	N	Y	N	N	Y	N	N	Y	Y	Y	
XTA 2.5G	Y	Y	Y	Y	Y	Y	Y	Y	N	N	Y	N	N	Y	N	N	Y	Y	Y	
XTA 10G	Y	Y	Y	N	N	N	N	N	N	N	N	N	N	N	N	N	N	N	Y	Y
XTA J&W 2.5G	Y	N	N	N	N	N	N	N	N	N	N	N	N	N	N	N	N	N	Y	Y
Fiber Channel	Y	Y	Y	Y	Y	Y	N	Y	N	N	Y	N	N	Y	N	N	Y	Y	Y	
Phase CD	Y	Y	Y	Y	Y	Y	Y	Y	Y	Y	Y	N	Y	Y	Y	Y	Y	Y	Y	
STFM	Y	Y	Y	Y	Y	Y	Y	Y	Y	Y	Y	Y	Y	Y	Y	Y	Y	Y	Y	

NOTES:

- 1 This table is based on a new or updated controller featuring the blue battery and software revision v20041201 or later.
- 2 OTA: There are several revisions of the OTA hardware that have different hardware profiles. Please review the four-digit code shown during the module discovery for proper identification.

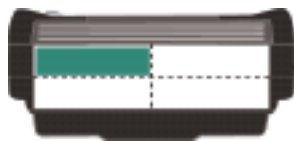
CMA5000 OTDR Order Guide



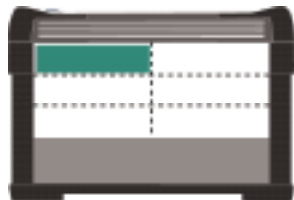
This module requires the following open slots:



SBA



MBA



LBA

CMA5000 - OTDR Module Order Guide

The CMA5200 OTDR's are Single Bay modules that include one OTDR/Source Universal Adapter (UC-130-XX) at no charge. For units with a Power Meter option, a Meter Connector Adapter (LP-XX) is also included at no charge.

52 - - OTDR -
A **B** **C**

A = Select an OTDR Module (Additional OTDR modules are available in various combinations of wave lengths and dynamic ranges. Please contact Anritsu for a comprehensive list.)

- 25 = Singlemode, 37/36 dB dynamic range, dual-wavelength 1310/1550 nm
- 35 = Singlemode, 40/40 dB dynamic range, dual-wavelength 1310/1550 nm
- 36 = Singlemode, 40/40/40 dB dynamic range, tri-wavelength 1310/1550/1625 nm
- 45 = Singlemode, 43/45 dB dynamic range, dual-wavelength 1310/1550 nm
- 46 = Singlemode, 43/45/43 dB dynamic range, tri-wavelength 1310/1550/1625 nm
- 54 = Singlemode, 50 dB dynamic range, single-wavelength 1550 nm
- 60 = Quad 24/26 dB 850/1300 nm 50 μm multimode and 35 dB 1310/1550 nm single mode
- 61 = Quad 24/26 dB 850/1300 nm 62.5 μm multimode and 35 dB 1310/1550 nm single mode
- 62 = Quad 24/26 dB 850/1300 nm 62.5 μm multimode and 40 dB 1310/1550 nm single mode
- 63 = Quad 24/26 dB 850/1300nm 50um multimode and 40/40 dB 1310/1550 nm single mode
- 66 = Multimode 24/26 dB dynamic range, dual-wavelength 850/1300 nm, 62.5 μm
- 69 = Multimode 24/26 dB dynamic range, dual-wavelength 850/1300 nm, 50 μm
- 81 = Singlemode, 37 dB dynamic range, tri-wavelength 1310/1383/1550 nm
- 83 = Singlemode, 37 dB dynamic range, quad-wavelength 1310/1383/1550/1625 nm
- 91 = Singlemode, 40 dB dynamic range, tri-wavelength 1310/1490/1550 nm
- 93 = Singlemode, 37 dB dynamic range, quad wavelegth 1310/1490/1550/1625 nm

B = Select Meter, Light Source and VFL Options (VFL is not available on 5260, 5261 or 5262 module)

- | | |
|--------------------------------------|---|
| 000 = No Meter, Light Source or VFL | 001 = VFL Only |
| 110 = +10 dBm Meter and Light Source | 111 = +10 dBm Meter, Light Source and VFL |
| 210 = +20 dBm Meter and Light Source | 211 = +20 dBm Meter, Light Source and VFL |

C = Select Connector (APC not available on multimode, all but 60, 61, 62 or 63 optics)

- | | | |
|--------------|--------------|--------------|
| UFC = FC/UPC | AFC = FC/APC | USC = SC/UPC |
| ASC = SC/APC | UST = ST/UPC | AST = ST/APC |

CMA5000 - OTDR Module Order Guide

C = Select Connector (60, 61, 62, and 63 optics only)

C1 = singlemode connector type

C2 = multimode connector type

C3 = power meter connector type (if ordered)

0=none

1=UFC

2=USC

3=UST

4=AFC

5=ASC

6=AST

7=DIN

8=LC

Example of order number and specifications

5236-110-OTDR-AFC	Singlemode, 40/40/40 dB dynamic range, tri-wavelength 1310/1550/1625 nm, Power Meter and Light Source with FC/APC connector
5266-001-OTDR-UFC	Multimode 24/26 dB dynamic range, dual-wavelength 850/1300 nm, 62.5 µm, VFL, with FC/UPC connector

CMA5000 XTA Order Guide



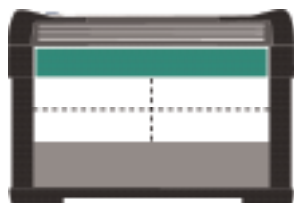
This module requires the following open slots:



SBA



MBA



LBA

CMA5000 - SDH/SONET XTA Module Order Guide

The CMA5600 XTA module is a test module for T-Carriers/PDH and SONET/SDH technologies up to 10 Gbps (depends on the module). It is a double (2-bay) module and can be used in either an SBA, MBA or LBA. Select base module and additional testing options below.

56 ___ - 000 - XTA
A

A = Select Base XTA Module

- 63 = XTA 10G 1310nm module (DS1/E1 to OC-192/STM64)
- 65 = XTA 10G 1550nm module (DS1/E1 to OC-192/STM64)
- 16 = XTA 2.5G module (DS1/E1 to OC-48/STM16)
- 04 = XTA 622 module (DS1/E1 to OC12/STM4).

Caution: this module is always delivered with J&W/TCM/Contiguous Concatenation functions

CMA5000 XTA Options - Must also order a 56XX-000-XTA base module.

56 ___ - ___ - XTA
A B

A = Select an XTA Module (must match base module)

- 63 = Option for XTA 10Gig 1310nm base module
- 65 = Option for XTA 10Gig 1550nm base module
- 16 = Option for XTA 2.5Gig base module
- 04 = Option for XTA 622 base module

B = Select Option (one reference per option)

- 101= Contiguous Concatenation
- 151= T-Carrier Package (MUX/DEMUX and Voice Add/Drop (mu-Law)
- 201= Tandem Connection Monitoring
- 251= High STM64/OC-192 optical sensitivity (for 5665 module only)
- 301= Jitter and Wander (Tx and Rx) (for 5616 module only)
- 351= Jitter and Wander (Tx only) (for 5616 module only)
- 401= ATM over SDH/SONET
- 501= Next Generation Monitoring (VCAT, LCAS, Diff Delay) for High Order paths (VC4, STS3c, STS1)
- 601= Next Generation Tx & Rx for High Order paths (VC4, STS3c, STS1): VCAT, LCAS, GFP-F, GFP-T, EoS (for 5616 module only)

Example of order number and specifications

5616-000-XTA	CMA5000 XTA 2.5G module
5616-301-XTA	Jitter and wander option for 2.5G module

CMA5000 OSA Order Guide



This module requires the following open slots:



SBA



MBA



LBA

CMA5000 - OSA (Optical Spectrum Analyzer) Module Order Guide

The CMA 5500 OSA modules cover the 1250 - 1650 nm spectral range. Two modules are available: the OSA 425 (standard OSA) and the OSA 400 (includes channel isolation feature).

The CMA 5500 OSA's are double-deep (4-Bay) modules that must be used with an MBA or LBA. Each module includes a large choice of connector styles with channel isolation feature that allows the user to select a channel to be isolated to an output port for input to additional test equipment (such as BERT) for optical signals up to 40Gb/s.

55 - - - OSA - -
 A B C

A = Select OSA module

10 = OSA 400 with filter: High Resolution Optical Spectrum Analyzer covering 1250 to 1650 nm with channel selection for optical signals up to 40Gb/s.

25 = OSA425: Optical Spectrum Analyzer covering 1250 to 1650 nm.

B=Depends on the OSA module selected

000: if OSA 425 module selected
 100: if OSA400 module selected

C = Select Connector

UFC = Ultra FC Singlemode (FC/UPC)
 USC = Ultra SC Singlemode (SC/UPC)
 AFC = Angled FC Singlemode (FC/APC)
 ASC = Angled SC Singlemode (SC/APC)

Example of order number and specifications

5525-000-OSA-UFC	OSA 425 Optical Spectrum Analyzer covering 1250 - 1450 nm with FC/UPC connector
5510-100-OSA-AFC	OSA400: High Resolution Optical Spectrum Analyzer covering 1250 - 1650 nm with channel selector for optical signals up to 40 Gb/s and angled FC/PC connectors

CMA5000 Polarization Mode Dispersion Order Guide



This module requires the following open slots:



SBA



MBA



LBA

PMD module

The PMD application is a double deep module which operates in a CMA5000 MBA or LBA. PMD range is up to 160ps for a birefringent fiber and 80ps for telecom fiber.

Reference: 5400-001-PMD

Optical sources

All sources listed below come with a soft bag, universal fiber optic physical contacting connector and operate on AC or battery.

Standard 1550 nm wavelength source

This is the standard source offering 1550 nm operation. It will provide very high dynamic range and is suitable in most optical fiber and optical cable PMD characterization tests. It provides more than +2 dBm output power at 1550 nm, giving more than 55 dB dynamic range at 1550 nm for 1 ps PMD and more than 47 dB at 1550 nm for 10 ps PMD when used with the CMA5000 PMD module. Reference : 5403-003-PMD

Dual 1310 nm and 1550 nm source

This is the dual wavelength source offering 1310 nm & 1550 nm operation. It provides more than -1 dBm output power at 1550 nm, giving more than 52 dB dynamic range at 1550 nm for 1 ps PMD and more than 44 dB at 1550 nm for 10 ps PMD when used with the CMA5000 PMD module. Reference : 5403-004-PMD

Dual 1550 nm and 1625 nm source

This is the dual wavelength source offering 1550nm & 1625 nm operation. It provides more than -2 dBm output power at 1550 nm, giving more than 51 dB dynamic range at 1550 nm for 1 ps PMD and more than 43 dB at 1550 nm for 10 ps PMD when used with the CMA5000 PMD module.

Reference : 5403-006-PMD

This module requires the following open slots:



SBA



MBA



LBA

1550 nm C-Band source

This is the ultra-broadband wavelength source offering 1550 nm operation and a minimum PMD measurement of 0.035 ps. It is targeted for very low PMD measurements.

It provides more than -10 dBm output power at 1550 nm, giving more than 43 dB dynamic range at 1550 nm for 1 ps PMD and more than 35 dB at 1550 nm for 10 ps PMD when used with the CMA5000 PMD module.

Reference : 5403-005-PMD

1550 nm High Power source

This is the ultra high power source offering 1550 nm operation and the highest dynamic range. It is targeted for ultra long haul PMD measurements as you can test more than 300 km of fibers.

It provides more than +11 dBm output power at 1550 nm, giving more than 64 dB dynamic range at 1550 nm for 1 ps PMD and more than 56 dB at 1550 nm for 10 ps PMD when used with the CMA5000 PMD module. Reference : 5403-010-PMD

PMD Artifact

The PMD Artifact is a piece of bi-refringent fiber with 1 ps PMD. Reference: 5402-000-PMD

CMA5000 - PMD Module and Light Source Order Guide	
Order Number	Description
5400-001-PMD-YY	Base PMD Double Deep Module, 160 ps
5402-000-PMD-YY	PMD Artifact
5403-003-PMD-X	Polarized broadband 1550 nm battery powered light source
5403-004-PMD-X	Polarized broadband dual 1310 nm & 1550 nm battery powered light source
5403-005-PMD-X	Polarized ultra-broadband 1550 nm B-band battery powered light source
5403-006-PMD-X	Polarized broadband dual 1550 nm & 1625 nm battery powered light source
5403-010-PMD-X	Polarized broadband 1550 nm High Power battery powered light source

X = Power cord Option:

- U = US,
- E = Europe
- G = Great Britain
- A = Australia

YY = Connector Option:

- FU = FC/UPC
- SU = SC/UPC
- FA = FC/APC
- SA = SC/APC

Note:

All light sources come with a universal connector compatible with all PC connectors with 2.5 mm diameter (FU, SU, TU)

CMA5000 Gigabit Ethernet Order Guide



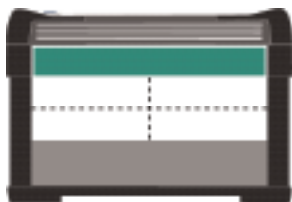
This module requires the following open slots:



SBA



MBA



LBA

CMA5000 - Gigabit Ethernet Module Order Guide

The Channel Statistics software option allows the user to quickly identify the root cause of network impairments, not just the symptoms. This option provides detailed statistics on all traffic received for up to 8,000 individual IP addresses of VLAN tags.

5700-__ __-GIGE
A

A = Select a GIGE Module

000 = GIGE module

001 = GIGE module with channel stats

CMA5000 Gigabit Ethernet GBIC Options

Must also order a 5700-XXX-GIGE base module

5700-__ __-GIGE
A

A = Select a GIGE Module

085 = 850 nm GBIC GigE Transceiver

013 = 1300 nm GBIC GigE Transceiver

015 = 1550 nm GBIC GigE Transceiver

Optional Accessory

5700-CS-OPT = Channel Statistics Upgrade for existing 5700-000-GIGE module

5700-SW2-OPT = Software option 2 - Multiple Traffic Stream Generation

5700-SW3-OPT = Software option 3 - Capture and Decode

5800-SW7-OPT = Software option 7- Capture and Decode with MPEG Filter

5700-MPG-OPT = Software option MPEG - MPEG Transport Stream Analysis

Example of order number and specification

5700-000-GIGE	Module with 2 ports for optical ethernet testing and 2 ports for electrical ethernet testing
5700-085-GIGE	850 nm GBIC GigE Transceiver

CMA Ethernet Reflector



CMA Ethernet Reflector Order Guide

The 10/100/1000 Mbps Ethernet traffic reflector box is a small, standalone unit available in two versions. One version offers one 10/100/1000 Mbps RJ45 port and one 1000Mbps optical port accessed through an SFP, the two port version offers two 10/100/1000 Mbps RJ45 ports and two 1000Mbps optical ports. The electrical interface(s) are standard on all units. The optical SFPs of choice must be ordered separately.

Order Number	Description
5700-001-REFL	Single optical and electrical port Reflector
5700-002-REFL	Dual optical and electrical ports Reflector
REFL-SOFT-CASE	Soft carry case for the Reflector unit
REFL-HARD-CASE	Hard transit case for Reflector unit
5700-085-REFL	850nm SFP for use with the optical port(s) on the Reflector unit
5700-013-REFL	1310nm SFP for use with the optical port(s) on the Reflector unit
5700-015-REFL	1550nm SFP for use with the optical port(s) on the Reflector unit

Example of order number and specification

5700-000-GIGE	Module with 2 ports for optical ethernet testing and 2 ports for electrical ethernet testing
5700-085-GIGE	850 nm GBIC GigE Transceiver
5700-001-REFL	Single optical and electrical port Reflector
REFL-SOFT-CASE	Soft carry case for the Reflector unit
5700-085-REFL	850nm SFP for use with the optical port(s) on the Reflector unit

CMA5000 10 Gigabit Ethernet Order Guide



This module requires the following open slots:



SBA



MBA



LBA

CMA5000 - 10 Gigabit Ethernet Module Order Guide

The CMA5800 10 Gigabit Ethernet module is a double wide module with modular optics that can be used in an SBA, MBA or LBA. The CMA 5000 10 Gigabit Ethernet module enables the user to test 10 Gigabit Ethernet LAN PHY Networks. The module offers one optical port accessed through an XFP. The XFP transceiver of choice must be ordered separately.

5800-__ __ -GIGE
A

A = Select a 10 GIGE Module
000 = 10 GIGE module

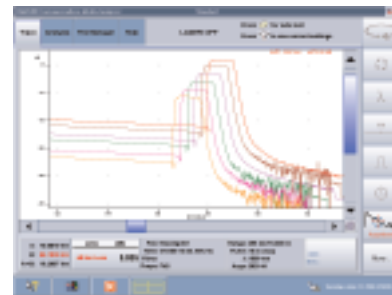
5800-__ __ -GIGE
A

A = Select a 10 GIGE Transceiver
085 = 850nm XFP Transceiver
013 = 1310nm XFP Transceiver
015 = 1550nm XFP Transceiver

Optional Accessories

5800-SW1-OPT = Software option 1 - Bit Error Rate testing capability
5800-SW2-OPT = Software option 2 - Capture and Decode
5800-SW3-OPT = Software option 3 - Sequence Testing

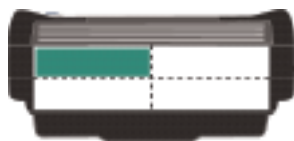
CMA5000 OTDR/Chromatic Dispersion Order Guide



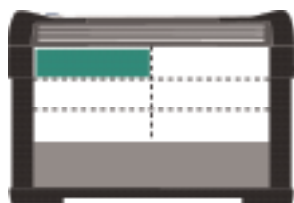
This module requires the following open slots:



SBA



MBA



LBA

CMA5000 - OTDR Based Chromatic Dispersion Module Order Guide

The CMA5302 OTDR based Chromatic Dispersion unit is a single bay module that can be used in either an SBA, MBA or LBA. It features time of flight CD measurements as well as traditional tri-wavelength OTDR testing.

5302-___-CDOTDR-___
 A B

A = Select a Meter and Light Source Options

- 110 = +10 dBm Meter and Light Source
- 210 = +20 dBm Meter and Light Source

B = Connector

- | | | |
|------------|------------|------------|
| UFC=FC/UPC | USC=SC/UPC | UST=ST/UPC |
| AFC=FC/APC | ASC=SC/APC | AST=ST/APC |

www.anritsu.com

Anritsu Corporation

5-1-1 Onna, Atsugi-shi, Kanagawa, 243-8555 Japan
Phone: +81-46-223-1111
Fax: +81-46-296-1264

• **U.S.A.**

Anritsu Company

1155 East Collins Blvd., Richardson, TX 75081, U.S.A.
Toll Free: 1-800-ANRITSU (267-4878)
Phone: +1-972-644-1777
Fax: +1-972-671-1877

• **Canada**

Anritsu Electronics Ltd.

700 Silver Seven Road, Suite 120, Kanata,
Ontario K2V 1C3, Canada
Phone: +1-613-591-2003
Fax: +1-613-591-1006

• **Brazil**

Anritsu Eletrônica Ltda.

Praca Amadeu Amaral, 27 - 1 Andar
01327-010-Paraiso-São Paulo-Brazil
Phone: +55-11-3283-2511
Fax: +55-11-3288-6940

• **U.K.**

Anritsu EMEA Ltd.

200 Capability Green, Luton, Bedfordshire LU1 3LU, U.K.
Phone: +44-1582-433280
Fax: +44-1582-731303

• **Germany**

Anritsu GmbH

Nemetschek Haus, Konrad-Zuse-Platz 1
81829 München, Germany
Phone: +49 89 442308-0
Fax: +49 89 442308-55

• **France**

Anritsu S.A.

9, Avenue du Québec Z.A. de Courtaboeuf
91951 Les Ulis Cedex, France
Phone: +33-1-60-92-15-50
Fax: +33-1-64-46-10-65

• **Italy**

Anritsu S.p.A.

Via Elio Vittorini, 129, 00144 Roma, Italy
Phone: +39-6-509-9711
Fax: +39-6-502-2425

• **Sweden**

Anritsu AB

Borgafjordsgatan 13, 164 40 KISTA, Sweden
Phone: +46-853470700
Fax: +46-853470730

• **Finland**

Anritsu AB

Teknobulevardi 3-5, FI-01530 Vantaa, Finland
Phone: +358-20-741-8100
Fax: +358-20-741-8111

• **Denmark**

Anritsu A/S

Kirkebjerg Allé 90 DK-2605 Brøndby, Denmark
Phone: +45-72112200
Fax: +45-72112210

• **Singapore**

Anritsu Pte Ltd.

10, Hoe Chiang Road, #07-01/02, Keppel Towers,
Singapore 089315
Phone: +65-6282-2400
Fax: +65-6282-2533

• **P.R. China (Hong Kong)**

Anritsu Company Ltd.

Suite 923, 9/F., Chinachem Golden Plaza, 77 Mody Road,
Tsimshatsui East, Kowloon, Hong Kong, P.R. China
Phone: +852-2301-4980
Fax: +852-2301-3545

• **P.R. China (Beijing)**

Anritsu Company Ltd.

Beijing Representative Office
Room 1515, Beijing Fortune Building,
No. 5, Dong-San-Huan Bei Road,
Chao-Yang District, Beijing 10004, P.R. China
Phone: +86-10-6590-9230
Fax: +86-10-6590-9235

• **Korea**

Anritsu Corporation, Ltd.

8F Hyunjuk Building, 832-41, Yeoksam dong,
Kangnam-ku, Seoul, 135-080, Korea
Phone: +82-2-553-6603
Fax: +82-2-553-6604

• **Australia**

Anritsu Pty Ltd.

Unit 21/270 Ferntree Gully Road, Notting Hill,
Victoria 3168, Australia
Phone: +61-3-9558-8177
Fax: +61-3-9558-8255

• **Taiwan**

Anritsu Company Inc.

7F, No. 316, Sec. 1, Neihu Rd., Taipei 114, Taiwan
Phone: +886-2-8751-1816
Fax: +886-2-8751-1817

• **India**

Anritsu Corporation

India Liaison Office

Unit No. S-3, Second Floor, Esteem Red Cross Bhavan,
No. 26, Race Course Road, Bangalore 560 001, India
Phone: +91-80-32944707
Fax: +91-80-22356648

Please Contact:

